



A MASTER PLANNED
COMMUNITY

An Extraordinary Lifestyle

THE NEWSLETTER

January 2011



In This Issue

- Community News & Notes
- Golf - 2011 Equipment & Apparel
- The "Course Whisperer" Speaks
- Tennis - Club championship
- Fitness - Biggest Loser Starts
- Overlook - "Pigs & Pinots"
- SVCC General News & Notes
- Shadow Valley CCRs & Info

COMING SOON

- ◇ Website enhancements to www.shadowvalleyinfo.com for mobile devices.
- ◇ Facebook - Find us at "Shadow Valley." Hit "Like" to add us as a "friend" and keep up with current Shadow Valley information.
- ◇ Twitter - Follow us at <http://www.twitter.com/ShadowValleyCC>



facebook



twitter

HIT

Like





DEVELOPMENT UPDATE

Lots Sold: 545
Lots Under Contract: 16
Lots For Sale: 94
Total Developed Lots: 655
Lots To Be Developed: +/- 270
New Homes Sold: 521
New Homes For Sale: 11

www.shadowvalleyinfo.com
Charles Reaves 479-619-9203

DOGS

All dogs must be on a leash whenever they are off your property.

Please be mindful of your dog's tendency to bark and be respectful toward neighbors. It's your responsibility to manage your dog(s).

Pick up after your dogs anywhere other than your own property.

TRASH / RECYCLING

Please be mindful of your neighbors and watch your trash and recycle bins. Keep the level of trash or recycled items below the rim to help keep the trash inside the containers.

Our trash day is Friday unless otherwise specified. Bulk trash day is the fourth Friday of each month.

Any questions, please call Inland Service Corp. at 878-1384.

LAWN CLIPPINGS & DEBRIS

Lawn clippings and other yard waste are the responsibility of the property owner to remove without blowing, sweeping or otherwise disposing of on streets, common areas or any other areas within the development.

Lawn bags are available at Inland Service Corp. at 3507 N. Arkansas Street in Rogers.

RESALE HOMES ON www.SHADOWVALLEYINFO.COM

All Shadow Valley Resale Homes included in the Multiple Listing Service (MLS) are now included on www.shadowvalleyinfo.com under the heading of Resale Homes without any action required by the Homeowner or Realtor.

All Homeowners listing their homes for sale should encourage Realtors to use the Welcome Center and other SVCC facilities just as they do for new homes.

A summary of Resale Home Sales since January 1, 2007 is updated regularly and made available to Appraisers and Realtors via the Realtor section of www.shadowvalleyinfo.com. This information can be obtained by Homeowners from the Welcome Center in hard copy form or via email.

SV COVENANTS, CONDITIONS & RESTRICTIONS (CCRs)

The Covenants, Conditions and Restrictions (CCRs) governing the community specifically prohibit among other things Temporary Structures such as Storage Sheds, Recreational Vehicles/Boats/Trailers/etc. and Portable Basketball Goals. Copies of the CCRs are available in the Welcome Center.

COMMUNITY SIGN POLICY

The Covenants, Conditions & Restrictions (CCRs) for the Community limit signage to "one professionally made sign per Lot of not more than six (6) square feet advertising a Dwelling for sale or lease". Authorized signs shall be placed in the front yard. All other signs require approval.

THINK ABOUT SOMEONE BESIDES YOURSELF AND

OBSERVE THE TRAFFIC RULES:

"18 MPH" / "STOP" / "GOLF CART X-ING"
(No excuses: You live here, you know what the signs look like).

This is a community filled with families (especially kids) wanting to enjoy the outdoors. Be considerate of others!

Hold your friends and neighbors and their guests accountable!

PERSONAL CARTS & VEHICLES

Take responsibility for operating personal carts and vehicles safely.

VEHICLE STICKERS

Vehicle stickers will ONLY be issued during normal business hours. Monday through Friday from 8:00 AM to 5:00 PM.

GATEHOUSE 203-0135

Please proceed slowly and be prepared to stop when entering or exiting the community for the safety of the staff and to allow them to read your vehicle sticker.

We have had several near accidents involving Gatehouse personnel, and gates broken recently due to excessive speed, failure to stop, "piggy-backing" behind other cars, etc.

YOUR COOPERATION IS EXPECTED!



STAFF DIRECTORY

General Manager

Rich Reaves 903-4141

Overlook Manager

203-0000 x 1 or 6 or 236-5877*

Executive Chef

Brad Meyers 203-0000 1 or 9

Co-Directors of Golf

Gavin Smith 203-0000 x 2

Richard James 203-0000 x 2

Co-Directors of Tennis

Dominick Hinds 203-0000 x 3

Luke White 203-0000 x 3

Director of Fitness

Bruce Williams 203-0000 x 4

Office Manager

Teresa Booher 203-0000 x 6

SVCC NUMBERS

Welcome Center 203-0000 x 0

The Overlook 203-0000 x 1

Golf Shop 203-0000 x 2

Tennis Shop 203-0000 x 3

Fitness Center 203-0000 x 4

Children's Act. Ctr. 203-0000 x 5

GM's Office 203-0000 x 6

Golf Course Superintendent's
Office 203-7046

CAC REMINDERS



- You MUST REMAIN on SVCC property (not in the development or elsewhere) to leave your child in the CAC.
- Absolutely NO outside snacks/food will be allowed inside the CAC. Many children have allergies to certain foods (most commonly peanuts). In an effort to minimize the problem, our snacks are limited to Cheerios and Goldfish and we do not allow any food items to be brought into the CAC.
- Sign In/Out: Please remember to sign in your child's FIRST & LAST NAME as well as your SVCC location (fitness, tennis, golf, restaurant, etc.).
- If you DO NOT sign your child/children in, there will be an additional \$5 charge added to your bill (daily and monthly included).
- Non-Member fees are \$7.00 per child for the first two hours and \$3.00 per child for each additional hour.

Please remember to pick up the children prior to closing time. It's not the responsibility of the Overlook staff to go get the children or the CAC staff to go get the parent / guardian.

- Feeding Policies: CAC personnel will only bottle/sippy cup feed infants and toddlers. No solid baby foods.

CLUBHOUSE

HOURS OF OPERATION

The Clubhouse will be open at 8:00 AM to 10:00 PM 7 days a week. These times are subject to change when special events, leagues, weather, etc. warrant.

See the department sections for specific hours or call 203-0000 x 0.

Check www.shadowvalleyinfo.com for closing information.

CHILDREN'S ACTIVITY CENTER (CAC)

The Children's Activity Center (CAC) is a great asset to SVCC which allows so many kids to enjoy the great atmosphere and numerous activities while the parents take advantage of what they want to do throughout the rest of the club.



In order to make the CAC experience the best possible for all involved, your help and cooperation is expected.

- Please allow enough time to sign all kids in and inform us of anything we should be aware of relative to your child.
- Please DO NOT bring in any sick children (if they have a fever or otherwise ill, you will be contacted to pick them up).
- Make sure children in diapers are "changed" prior to entering the CAC and provide additional diapers in their bag.
- Leave "personal" toys or other such items at home.

Please keep in mind the CAC is a service provided for our members. Those who choose not to follow the rules WON'T be allowed to use the service.

MEMBERSHIP INFORMATION

Fees and dues
excluding taxes:

Membership Type	Initiation Fees	Monthly Dues
Social	\$1,000	\$85
Tennis	\$2,250	\$145
Golf	\$5,000	\$275
Transfer Fee: \$100		
Upgrades: Contact the Welcome Center for more details.		

PAYMENT POLICY

There are two options for purchases at SVCC:

- Utilize the credit card that you registered with SVCC to be kept "on file."
- Present a credit card at the time of transaction.

If you do not have a card on file or would like to add a card, please stop by the Welcome Center.

COMMENTS & SUGGESTIONS

If you have any comments or suggestions, please contact the GM's Office at 203-0000 x 6 or gm@shadowvalleyinfo.com



CHEF'S CORNER

2010 Was a great year for me both personally and professionally and I want to thank you for your support. On behalf of my Culinary Team, I'd like to wish you a Happy New Year.

New Year's Resolutions? Be sure to stop in and try our Skinny Menu items to help get those extra holiday pounds off.

Biggest Loser? We are your secret weapon...let us cook healthy food for you whether for dine in or to go.

New Year's Eve dinner was a huge succes with record numbers attending the dinner and the party. Thanks for your support and please remember to mark your calendars for Valentine's Day dinner.

VALENTINE'S DAY

Monday, February 14th

Save the date and make plans for a great dinner date!



WINE TASTING "PIGS & PINOT"

JANUARY 22ND
7:00 PM \$45
Willamette Valley



This month's food and wine paring will be a combination of Chef Brad's pork dish creations and three lovely pinot noirs. The first course will be Corn Chowder with Pork Belly and Jalapeño Cornbread. The second course will consist of Bacon Wrapped Stuffed Chicken Breast with Sun Dried Tomatoes, Goat Cheese, Pesto Risotto with a side of Basil Chicken Jus Reduction. Then we'll finish with Korean Barbeque Braised Pork Short Ribs with Parsnip Puree and Roasted Beets. Our wine selection will be from Eola Hills, MacMurray Ranch and Willamette Valley.

Please call ahead to make reservations for this exciting event!

2ND ANNUAL DADDY DAUGHTER DANCE

BENEFITING THE
NATIONAL CENTER FOR FATHERING

SATURDAY, FEBRUARY 5TH

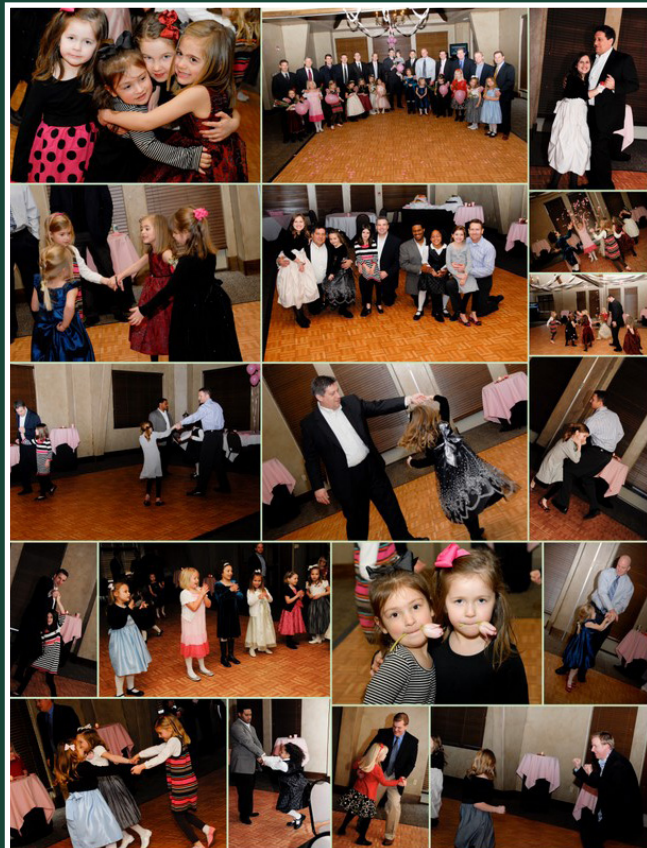
Last year's Daddy Daughter Dance was such a success it's time for Shadow Valley's Second Annual Daddy Daughter Dance! There will be 1½ hour time slots for daughters of various ages ranging from 4 to 12.

Hors d'oeuvres, light refreshments will be served along with music and a photographer will be available to capture the moments.

Please sign up in the Welcome Center by January 31ST.

Details to follow in next month's newsletter.

\$18 for Dads
\$15 for Daughters



FISH BY THE OUNCE FRIDAY, JANUARY 28TH

Back by popular demand...Fish by the Ounce. Similar to Steak By The Ounce, this is a great way to sample different varieties of fish in the portion size you want. This month we are offering an array of fish including Chilean Sea Bass, Tuna and Halibut.



Please RSVP with the Overlook or the Welcome Center so that we may accommodate you and your guests.

OVERLOOK NEWS & NOTES

Chef Brad Meyers
479-203-0000 X 1
overlook@shadowvalleyinfo.com



IRON CHEF SUSHI NIGHT THURSDAY, JANUARY 20TH



Once again Chef Brad and the culinary crew will be preparing the Overlook's House Made Sushi Rolls. We will be offering Sake as well to compliment the Far East cuisine.

This month we'll be featuring the Overlook California Roll, Spicy Tuna with Avocado Roll, Firecracker Shrimp Roll and Shrimp Sashimi.

Please call ahead for reservations so that we may accommodate you and your guests.

STEAK BY THE OUNCE FRIDAY, JANUARY 14TH

If you want some of the best steaks in NWA made just the way you like them, then make sure to reserve a spot at the Overlook Restaurant for your size cut of Ribeyes, N.Y. Strips, and Tenderloins. We know you will love it!



Please RSVP with the Overlook or the Welcome Center so that we may accommodate you and your guests.

DATES TO REMEMBER

JANUARY

- 13th - Mexican Buffet
- 13th - Biggest Loser Weigh-In
- 14th - Steak By The Ounce
- 18th - Fried Chicken Buffet
- 20th - Iron Chef Sushi Night
- 22nd - "Pigs & Pinots" Food & Wine Tasting
- 28th - Fish By The Ounce

FEBRUARY

- 5th - Daddy Daughter Dance
- 8th - Fried Chicken Buffet
- 11th - Steak By The Ounce
- 14th - Valentine's Day Dinner
- 17th - Mexican Buffet
- 13th - Biggest Loser Weigh-In
- 24th - Iron Chef Sushi Night
- 25th - Fish By The Ounce

Note: All dates and times subject to change.

CHEF'S TABLES / EVENTS / MEETINGS / PARTIES / HOLIDAY PARTIES

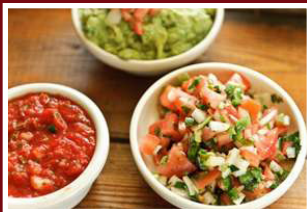
The opportunities are endless...Baby Showers, Bunco Night, Graduation Parties, Rehearsal Dinners, Business Meetings and Meals. You name it, we'll work with you to plan it.

Our Clubhouse has spaces to accommodate groups from 10-180. We look forward to working with you to customize your menu and event décor to meet your expectations at a fraction of the price of other event venues.

MEXICAN BUFFET THURSDAY, JANUARY 13TH

Chef Jaime and crew will be kicking off the year serving up some delicious Mexican cuisine.

They'll be creating some of the most delicious Enchiladas, Fajitas and Build-Your-Own Tacos along with the Overlook's favorites: Tortilla Soup, Chips, Salsa, Queso and House Made Guacamole.



Adults \$14.99
Children 6-12 \$7.99
Children 3-5 \$3.99

SOUTHERN FRIED CHICKEN BUFFET TUESDAY, JANUARY 11TH



Come on in for Chef Brad's famous Boneless Fried Chicken, Garlic Whipped Mashed Potatoes and Venison Gravy, All-Day Stewed Green Beans and his House Made Cobbler A La Mode.

Adults \$13.99
Children 6-12 \$7.99
Children 3-5 \$4.99

REMINDERS / ETIQUETTE

Be mindful of your child's behavior. The Overlook is a casual environment, but it's also a fine dining experience for many.

Children need to be at the table supervised by an adult at all times and are not permitted to be roaming around the Clubhouse (inside or out).

Children in the CAC must be picked up by their responsible party prior to the closing time of the CAC.

BIRTHDAY DINNER NIGHT

Members, come in on your birthday and get a complimentary appetizer or dessert with your meal.

No RAIN CHECKS! DINE IN ONLY!

EMAIL DISTRIBUTION LIST

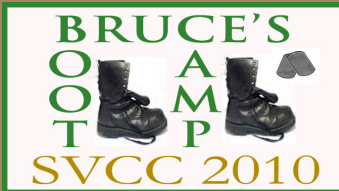
Contact the Welcome Center to add your email to the distribution list and stay informed.

Your email will not be shared.

HOURS OF OPERATION

MONDAY - FRIDAY
11:00AM - 10:00PM
SATURDAY & SUNDAY
8:00AM - 10:00PM

Note: The Kitchen closes at 9:00PM



ULTIMATE BOOT CAMP!

Want the ultimate workout challenge? Here's your chance to get involved in the "Ultimate Boot Camp!" Each group will be limited to 10 participants, a minimum of 6 per group. First come, first serve. Non-members may participate at an additional cost of \$25.

Each group will work out every day - rain or shine. The workouts will be a mix of cardio, weight training, stretching and fitness challenges. The objective will be to help you lose body fat and gain strength while offering you lots of variety and plenty of intensity!

These classes will have some running and lots of different leg work, so if you have bad knees this probably isn't for you. You must be able to jog one-half mile before you start.

EARLY RISERS GROUP

- Starts: Mon JAN 3RD
- Ends: Fri JAN 28TH
- Meets: Mon - Fri
5:15 AM - 6 AM
\$99 / Person

NOT SO EARLY RISERS GROUP

- Starts: Mon JAN 3RD
- Ends: Fri JAN 28TH
- Meets: Mon - Thu
9 AM - 9:45 AM
\$99 / Person

BRUCE WILLIAMS DIRECTOR OF FITNESS



Since SVCC's opening, I've been a member of the management team as the Director of Fitness providing the following services:

- Personal Training
- Various Group Classes
- Kids Fitness Activities
- Nutrition & Meal Planning
- Sport Specific Training Plans
- Rehabilitation & Physical Therapy

I've made my career in the fitness industry. I have a Masters of Exercise Science from the University of Arkansas, but just as important is my 20+ years experience working with clients ranging from professional athletes to weight room beginners.

Why use a professional trainer? Accountability, safety, intensity, new training routines and nutritional advice, etc.

Please feel free to stop in or contact me to talk about your next step in achieving better health and wellness. Ask me about setting up your free one-time fitness orientation.

CONTACT INFORMATION
 203-0000 x 4
 bmwfit@mac.com

BRUCE'S BAD A*S BOOT CAMP LADIES



JANUARY

GROUP / AEROBICS CLASS SCHEDULE

There is a \$20.00 fee for members (\$30.00 for NON-MEMBERS). The fee covers unlimited classes for a "Household" throughout the month.

Inclement Weather Policy - When local schools close due to weather-ALL classes are cancelled!

Day of Week	Start Time	Class Type	Class Location
Monday	9:00 AM 9:00 AM	Boot Camp Yoga	Fitness Center Belfry Room
Tuesday	6:00 AM 9:30 AM 6:00 PM	Cycling Pump/Cycling *NEW* - Yoga	Belfry Room Belfry Room Belfry Room
Wednesday	9:00 AM 6:00 PM	Pilates-Mat Kick Boxing	Belfry Room Belfry Room
Thursday	6:00 AM 9:30 AM 6:00 PM	Cycling Pump/Cycling *NEW* - Yoga	Belfry Room Belfry Room Belfry Room
Friday	8:30 AM 9:00 AM	Boot Camp Yoga	Fitness Center Belfry Room
Saturday	8:00 AM	Cycling	Belfry Room

MON - FRI

**FITNESS CENTER
 HOURS**

5:00 AM - 10:00 PM

SAT - SUN

7:00 AM - 10:00 PM



BIGGEST LOSER 2011

If the past is indicative of the future, this should prove to be one of the best fitness events of the year...come join the fun!

What is it: Teams comprised of three people compete against each other to win the title of SVCC 2011 Biggest Loser (plus bragging rights, a better body, prizes and cash)! The Biggest Loser will be determined by the highest percentage of weight loss between January 13th and March 3rd.

GENERAL INFORMATION

Teams: Teams of EITHER Two (2) or Three (3) individuals - any mix (even two members and one non-member).

Cost: \$60 / individual

Starts: Thursday, January 13th @ 7 PM Ends? Thursday, March 3rd @ 7 PM

How to sign up: Talk to Bruce and show up with your partners on January 13th.

No Partner: That's fine, you'll be randomly matched with a partner or two on January 13th.

What you get: A program including: cardio, weight training and a diet. Accountability. Competition. Weekly prizes - gift certificates. Grand prize - CASH!!!

Who wins: Each week one female and one male will be crowned. The winner is whoever has the highest percentage of body weight lost in a week.

Grand prize: Cash prizes to the top two female and male winners.

LAST CHANCE WORKOUT: Every Wednesday night everyone is invited to attend a challenging group workout to sweat out those extra pounds. Classes will meet every Wednesday night @ 7 PM for a 45 minute workout. No extra fee. This is an optional workout (i.e. not required, but a good idea).

YOU DO NOT have to attend each Thursday weigh-in to compete in the contest. Due to travel, sickness, etc. there is no penalty for missing a scheduled weigh-in. To qualify for the grand prizes you do have to weigh-in a minimum of 4 times throughout the contest.



WLFC/SVCC WINTER CLASSIC

Tournament ID: 703304111,703304511
Dates: Singles February 4-6, 2011
Doubles February 11-13, 2011
Divisions: Ranked: MW(Op)s, FMLC; NM (2.5-4.5)s, FMLC;
NW (2.0-4.5)s, FMLC
Organization: Walton Life Fitness Center
1701 SE 14th St
Bentonville, AR72712
Org Phone: 479-204-1009
Director: Jake Shoemake/Luke White
Director Phone: 479-795-0112
Director Phone Other: 479-795-0112
Director Email: bgdog28@aol.com
Singles deadline: Monday January, 31st
Doubles deadline: Monday February, 7th
Section: Southern District: Arkansas
Surface Type: Hard Indoor
Entry Fee: \$25 for singles \$18 per player for doubles

TENNIS CLASSES

Class sign ups for the next session will go up on the bulletin board in December. These fall classes will start the week of January 10th. Golf or Tennis Membership status is required for all Junior and Adult classes.

Zach will be teaching all the sign up classes and he is also available for private individual and group lessons.

LESSON PRICES

Private lessons are \$45/hour.

Group lessons are based on the following rates:

2 Member Group	- \$22.50	Non-Member	- \$26.00
3 Member Group	- \$15.00	Non-Member	- \$18.50
4 Member Group	- \$11.25	Non-Member	- \$14.75
5-8 Member Group	- \$9.00	Non-Member	- \$12.50

Note: These prices are subject to change at any time.

2011 ADULT USTA LEAGUE TIMELINE

January 17th

Last day for Captains to register in TennisLink. Team Registration closes in TennisLink at 10:59 PM CST.

January 24th

Adult Season begins. Captains may schedule matches.

March 11-14th

Adult 2.5/4.5 Mid-Season Tournament
Entry ONLY via www.arkleaguetenis.com

April 1-4th

Adult 2.0 and 3.5 Mid-Season Tournament

April 8-11th

Adult 3.0 and 4.0 Mid-Season Tournament
Entry ONLY via www.arkleaguetenis.com

May 2nd

ADULT SEASON ENDS for NTRP levels 2.5, 3.5, & 4.5
All adult matches must be completed for these levels

May 4th

All scorecards for NTRP levels 2.5, 3.5, & 4.5 must be entered on TennisLink

May 16th

ADULT SEASON ENDS for NTRP levels 2.0, 3.0, 4.0, & 5.0
All adult matches must be completed for these levels

May 18th

All scorecards for NTRP levels 2.0, 3.0, 4.0 & 5.0 must be entered on TennisLink

May 20-23th

USTA Arkansas League State Championships
Adult NTRP Levels 2.5, 3.5, 4.5
Entry Deadline May 9th @ 4 PM*
Entry ONLY via www.arkleaguetenis.com
Draw May 11th @ 10 AM at ATA office
Schedule posted to TennisLink May 13th by 5 PM

June 10-13th

USTA Arkansas League State Championships
Adult NTRP Levels 2.0, 3.0, 4.0, 5.0
Entry Deadline May 30th @ 4 PM*
Entry ONLY via www.arkleaguetenis.com
Draw June 1st @ 10 AM at ATA office
Schedule posted to TennisLink June 3rd by 5 PM

SECTIONAL CHAMPIONSHIPS

Mobile, AL

Jul 30 - Aug 2nd Adult Men & Women 2.5, 3.0, 3.5
Aug 4 - Aug 7th Adult Men & Women 4.0, 4.5, 5.0, 5.5, Open

www.shadowvalleytennis.com

If you haven't already registered, go to www.shadowvalleytennis.com and click on the register button. Once you're registered, you can make online court reservations, receive daily emails about upcoming events, programs and become a member of the string center. Our online store allows you to choose from a selection that easily rivals Tennis Warehouse which allows our members to select from major brands such as Adidas, Reebok, Wilson and NIKE!



2010 CLUB CHAMPIONSHIP PICS

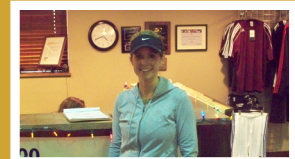


CLUB CHAMPIONSHIP

The weekend of December 3-5TH the 2ND Annual Tennis Club Championships provided another glimpse into the camaraderie and bond forged among SVCC Tennis Members. Delicious food served from the Overlook to the vibrant dance moves on the dance floor (Alex), there was something for everyone. The tennis was also not too bad!

RESULTS

Womens 2.0 Singles Winner	Jill Eckert
Womens 2.5 Doubles Winners	Tracy Nicholson/Joanna Rodriguez
Womens 3.0 Doubles Winners	Beth Clark/Carolyn Gilmore
Womens 3.5 Doubles Winners	Karen Long/Alyssia Treece
Mens 3.0 Doubles Winners	Andy Kaufmann/Mark Pestana
Mens 3.5 Singles Winner	Chris Taylor
Mens 3.5 Doubles Winners	Dustin Conwill/Steven Bauer
Mens Open Doubles Winners	Dominick Hinds/Peter Klauck





TEE TO GREEN FROM THE COURSE WHISPERER

2011...it's hard to believe it's time to start a new year. I hope everyone had a joyous Christmas Holiday season with family and friends.

Thanks to a few weeks of some pretty mild temperatures in December, our crew got an early start to a few projects that we had planned for 2011. We are cutting out the sunken drainage and water line ditches in the fairways. So far the guys have finished #11 and are getting close to finishing #12. We'll continue to address these areas around the entire golf course as long as the ground isn't frozen. As you play this winter you will see areas of exposed dirt, these areas will be sodded but in the process of cutting out these areas we have sod that is just not suitable to be re-laid. Because this sod comes from eastern Arkansas, I'm going to wait until we need a couple of pallets to make arrangements for delivery of the sod. The other project that we have started working on again was making some of our bunkers more playable, plus making them easier to maintain. We have removed the sand from the bunker on #1 fairway and the 1st bunker on the right side of #2 fairway. I know that we'll be re-working the greenside bunker on #2, but after that one is finished I will be meeting with Rich, Gavin and Richard to prioritize a list of which bunkers we'll address next.

Brien has completed locating and getting 210 GPS locations to all our valves and wire splice boxes around the golf course. Having this information is really going to come in handy in the future. Another project that we are continuing work on is re-wiring of the irrigation control boxes around the golf course. At the present time the wiring inside the boxes has no specific order for how the sprinkler would run if we started a manual program. Upon completion of the re-wiring project, the wiring in all boxes will be the same for each hole throughout the golf course and save us precious time during the season. That order will be as follows, green sprinklers, surround heads, tees, fairway and roughs with those heads starting at the tees and progressing towards the green. We will also be able to take this information back to the computer that controls the irrigation system and make sure all the heads are entered correctly there.

At the maintenance facility, Ryan has been busy cleaning the shop area, organizing parts bins and building some new enclosures for us to house our weed-eaters, blowers, generators, etc. When those tasks are finished he will begin grinding reels and preparing all our equipment for the 2011 growing season.

Winter may be a slow time for the golfers, but it's a surprisingly busy time for my crew to get some projects accomplished that we can't address during the actual golfing season.

As always I encourage you to contact me if you have any questions or comments about what is happening on the course.





GUEST PLAY: POLICIES / PROCEDURES / PACKAGES

Regular guest fee is \$65 per guest.

Our goal is to serve our members and their guests in a professional, friendly manner.

GUEST POLICIES & PROCEDURES

- Members are responsible for their guests.
- All Guests **MUST** check in at the Golf Shop **PRIOR** to any play (including warm-up) and must be accompanied by the member.
- Tennis and Social members plus Benton and Washington county residents may only play 4 times per calendar year and must be accompanied by a Golf member.
- Inform your guest of the dress code.
- Always call ahead for a tee time.
- Inform the staff **BEFORE** your guest arrives if there are any special instructions on how you'd like to handle any payments.
- Members who have guest(s) that "sneak on" will be charged for a full round of golf and are subject to suspension of privileges.

GUEST FEE GIFT PACKS

6 Pack	\$342* (\$57 per guest)
9 Pack	\$468* (\$52 per guest)
12 Pack	\$342* (\$45 per guest)

* = Non-Refundable

PERSONAL CARTS & VEHICLES

Personal Carts and Vehicles will **NOT** be allowed behind the Clubhouse or on any cart paths. Personal vehicles may only be driven on the **ASPHALT** portions of the Clubhouse parking lot and are to be parked in the designated cart parking spaces.

Please monitor the drivers as many of you have expressed concerns about the "reckless" driving.

VANDALISM

Help us protect the course. If you see someone acting suspiciously or witness anyone on the course not playing golf, please notify the Golf Shop or the Gatehouse to report such incidents.

DRESS CODE

Appropriate golf attire is required for practice and play. If dressed inappropriately, you and/or your guests will be asked to comply immediately.

Appropriate Golf Attire: Collared shirt, no gym shorts, no denim, no t-shirts, etc.

REMINDERS / ETIQUETTE

All golfers must sign in at the Golf Shop **PRIOR** to playing or going onto the course. If the Golf Shop is closed, so is the course and related facilities. Entering and exiting the course should occur only at the Clubhouse.

All beverages consumed on the course must be purchased through SVCC. Stocking up in the parking lot or elsewhere could result in suspension of Golf Membership privileges.

Range bags and balls are SVCC property. Do not remove from SVCC property.

DO NOT take your cart or play your errant shot from someone's property.

COMMUNITY CART REMINDERS

MAINTENANCE-It's very important that your leased cart is maintained well. Therefore, if you are leasing a cart we **REQUIRE** that you bring your cart in for monthly service. We will check the battery water level, check the tire air pressure and clean the cart. Your cart should be ready for pick up within 24 hours.

DON'T BREAK YOUR LEASE AND LOSE YOUR CART!!!

You are in violation of your lease if you are:

- Strapping kids in the bagwell.
- Allowing anyone not in your household to drive the cart.
- Stopping at a house during a round to get food or beverages.
- Letting kids without a driver's license (not a permit) drive the cart.
- Driving anywhere on the course without first checking in at the Golf Shop **PRIOR** to playing (and yes that includes at night).



If you have any questions about Community Carts, please contact the Golf Shop.

FIVESOMES

In order to maintain a proper pace of play, we need to be sure that there are no fivesomes during weekend play in the morning groups. If you'd like to play as a fivesome, please check with the Golf Shop and make your tee time for afternoon play.

Remember if you do play as a fivesome, be respectful of the groups behind you and allow them to play through.

FISHING

Fishing on the Golf Course is **STRICTLY FORBIDDEN!** This policy is in place to keep you safe from errant golf shots and keep golfers from being distracted.

Please observe this policy and make sure your guests are aware as well.

JANUARY HOURS

GOLF SHOP: 8:00AM - Sunset
GOLF COURSE: 9:00AM - Sunset
PRACTICE FACILITIES: 8:30AM - 1 Hour prior to sunset.

Please call ahead to get course and range conditions.



2011 EQUIPMENT ARRIVING

SVCC LADIES HOODIES



There have been numerous requests for Ladies hooded sweatshirts. So, for those of you who wanted one, come and get it!

TAYLORMADE EQUIPMENT

The Golf Shop will be receiving the new 2011 TaylorMade equipment soon.



Stop by the Golf Shop to see all the new equipment!

2011 MEN'S NIGHT OUT

This year we will have the Men's Night Out 9-hole Scrambles every Thursday night in May, June and July. We do have a few dates blocked for events, so please check the 2011 Golf Calendar for those dates.

2011 GOLF EVENTS

SVCC is pleased to announce that we'll be hosting the 2011 Arkansas State Golf Association's Stroke Play Championship a.k.a. The State Amateur. The event will take place in early June and will only inconvenience member play for a few hours each day during the event.

We are very pleased and honored that the ASGA has asked to use our facility to host this event as it is considered to be one of the best ASGA events annually. Hosting the event is a credit to not only our membership, but to the hard work that has been put into place on and off the golf course.

The tournament is open to any ASGA member (SVCC Golf Members with an established USGA handicap are considered members of the ASGA).

GOLF SHOP SALE

We still have many items marked down to make room for the new 2011 equipment and apparel. Come check out the deals still available.

2011 HANDICAP FEES

The 2011 Handicap charges will take place in February. If you don't wish to be charged for the service, contact us immediately. All players in the system as of January 1st are scheduled to be billed in February.

SVWGA

Thanks to all who participated in the various SVWGA events last year.

If you are interested in learning more about the SVWGA, please contact Vera Huber at 381-7733 or Keri Hayes at 790-6499. Sign up sheets for events are available at the Golf Shop.

SVMGA INFO & EVENTS

Thanks to all who participated in the various SVMGA events last year.

Contact the Golf Shop for details on SVMGA events, times, fees, etc.

HOLE-IN-ONE CLUB

Not a member of the SVCC Hole-In-One Club? Sign up today to earn Golf Shop and Overlook Restaurant credit when you do make your ace (surely you are due)!

Hole-In-One Club members are billed \$5 dollars each month. At the end of the month the pot is split up equally among anyone who made a Hole-In-One that month. If no one has recorded an ace, the pot will be carried over into the next month.

Ask any of our Golf Professionals for more details.

GOLF CART ETIQUETTE

Please be sure to practice Golf Cart Etiquette when playing at SVCC. Proper Golf Cart Etiquette entails minimal turf traffic to lessen the damage done by the vehicles. Some easy ways to do this are:

- Use the 90 degree rule as much as possible (keep cart on path as much as possible, turn 90 degrees off path to the ball, play the shot and return 90 degrees to the path)
- Keep Cart on path while playing any par 3 (regardless of course conditions)
- Keep all four tires on the Cart Path when teeing off as well as when on the putting green (i.e. parking just off the green on #12 should be avoided, please park on the cart path)
- Return the Golf Cart to the path when within 50 yards of the green.
- Observe the Course signage (i.e. #10 fairway, 200 yards out - 165 yards out should be free of cart traffic)
- Never drive the cart within hazard boundary lines or within about 10 yards of water hazards or bunkers.
- Never drive off the cart path onto or close to tee boxes
- Never drive the cart through mud, on or off the fairway.
- Never drive through casual water on any part of the golf course (unless it's a little bit of water over a paved cart path). The wheels of the cart can do serious damage to the turf, including leaving ruts, in wet areas.
- Never go "joyriding" in the golf cart. In other words, don't act stupid! People do get injured in cart accidents.

Your cooperation is expected and appreciated.