



A MASTER PLANNED
COMMUNITY

An Extraordinary Lifestyle

THE NEWSLETTER

2012 Fall Festival!



Haunted Houses



Haunted Hayrides

In This Issue

- Community News & Notes
- Golf - Event Results & Sales
- GCM - The Aerification Process
- Tennis - WLFC/SVCC Jr. Classic
- Fitness - Las Vegas Tough Mudder
- Overlook - Chili Cook Off
- SVCC General News & Notes
- Shadow Valley CCRs & Info

CHILI COOK OFF
@ THE FALL FESTIVAL
SUNDAY, OCT. 28TH

KIDS EAT FREE
MONDAY - THURSDAY
IN OCTOBER



Shadow Valley NWA



@ShadowValleyNWA

follow us on
twitter





DEVELOPMENT UPDATE

Lots Sold: 559
Lots Under Contract: 11
Lots For Sale: 85
Total Developed Lots: 655
Lots To Be Developed: +/- 270
New Homes Sold: 540
New Homes For Sale: 8

www.shadowvalleyinfo.com
Charles Reaves 479-619-9203

DOGS

All dogs must be on a leash whenever they are off your property.

Please be mindful of your dog's tendency to bark and be respectful toward neighbors. It's your responsibility to manage your dog(s).

Pick up after your dogs anywhere other than your own property.

TRASH / RECYCLING

Please be mindful of your neighbors and watch your trash and recycle bins. Keep the level of trash or recycled items below the rim to help keep the trash inside the containers.

Our trash day is Friday unless otherwise specified. Bulk trash day is the fourth Friday of each month.

Any questions, please call Inland Service Corp. at 878-1384.

LAWN CLIPPINGS & DEBRIS

Lawn clippings and other yard waste are the responsibility of the property owner to remove without blowing, sweeping or otherwise disposing of on streets, common areas or any other areas within the development.

Lawn bags are available at Inland Service Corp. at 3507 N. Arkansas Street in Rogers.

RESALE HOMES ON www.SHADOWVALLEYINFO.COM

All Shadow Valley Resale Homes included in the Multiple Listing Service (MLS) are now included on www.shadowvalleyinfo.com under the heading of Resale Homes without any action required by the Homeowner or Realtor.

All Homeowners listing their homes for sale should encourage Realtors to use the Welcome Center and other SVCC facilities just as they do for new homes.

A summary of Resale Home Sales since January 1, 2007 is updated regularly and made available to Appraisers and Realtors via the Realtor section of www.shadowvalleyinfo.com. This information can be obtained by Homeowners from the Welcome Center in hard copy form or via email.

SV COVENANTS, CONDITIONS & RESTRICTIONS (CCRs)

The CCRs governing the community have been amended to correct a scrivener's error and declare clarifications, revisions and additions. The primary change adds conditions and restrictions governing the operation of vehicles in the community. Specific information will be provided prior to implementation which is planned for the next couple of months. Copies of the CCR's are available in the Welcome Center.

COMMUNITY SIGN POLICY

The Covenants, Conditions & Restrictions (CCRs) for the Community limit signage to "one professionally made sign per Lot of not more than six (6) square feet advertising a Dwelling for sale or lease". Authorized signs shall be placed in the front yard. All other signs require approval.

THINK ABOUT SOMEONE BESIDES YOURSELF AND OBSERVE THE TRAFFIC RULES:

"18 MPH" / "STOP" / "GOLF CART X-ING"

This is a community filled with families (especially kids) wanting to enjoy the outdoors. Be considerate of others!

Hold your friends and neighbors and their guests accountable!

PERSONAL CARTS & VEHICLES

Take responsibility for operating personal carts and vehicles safely.

VEHICLE STICKERS

Vehicle stickers will ONLY be issued during normal business hours. Monday through Friday from 8:00 AM to 5:00 PM.

GATEHOUSE 203-0135

Please proceed slowly and be prepared to stop when entering or exiting the community for the safety of the staff and to allow them to read your vehicle sticker.

We have had several near accidents involving Gatehouse personnel, and gates broken recently due to excessive speed, failure to stop, "piggy-backing" behind other cars, etc.

YOUR COOPERATION IS EXPECTED!



STAFF DIRECTORY

General Manager

Rich Reaves 903-4141

Overlook Manager & Executive Chef

Aaron Nix 203-0000 1 or 9

Co-Directors of Golf

Gavin Smith 203-0000 x 2
Richard James 203-0000 x 2

Director of Tennis

Luke White 203-0000 x 3

Director of Fitness

Bruce Williams 203-0000 x 4

Office Manager

Teresa Booher 203-0000 x 6
236-5877

SVCC NUMBERS

Welcome Center 203-0000 x 0
The Overlook 203-0000 x 1
Golf Shop 203-0000 x 2
Tennis Shop 203-0000 x 3
Fitness Center 203-0000 x 4
Children's Act. Ctr. 203-0000 x 5
GM's Office 203-0000 x 6
Golf Course Superintendent's Office 203-7046

CAC REMINDERS



- You MUST REMAIN on SVCC property (not in the development or elsewhere) to leave your child in the CAC.
- Absolutely NO outside snacks/food will be allowed inside the CAC. Many children have allergies to certain foods (most commonly peanuts). In an effort to minimize the problem, our snacks are limited to Cheerios and Goldfish and we do not allow any food items to be brought into the CAC.
- Sign In/Out: Please remember to sign in your child's FIRST & LAST NAME as well as your SVCC location (fitness, tennis, golf, restaurant, etc.).
- If you DO NOT sign your child/children in, there will be an additional \$5 charge added to your bill (daily and monthly included).
- Non-Member fees are \$7.00 per child for the first two hours and \$3.00 per child for each additional hour.

Please remember to pick up the children prior to closing time. It's not the responsibility of the Overlook staff to go get the children or the CAC staff to go get the parent / guardian.

- Feeding Policies: CAC personnel will only bottle/sippy cup feed infants and toddlers. No solid baby foods.

CHILDREN'S ACTIVITY CENTER (CAC)

The Children's Activity Center (CAC) is a great asset to SVCC which allows so many kids to enjoy the great atmosphere and numerous activities while the parents take advantage of what they want to do throughout the rest of the club.



In order to make the CAC experience the best possible for all involved, your help and cooperation is expected.

- Please allow enough time to sign all kids in and inform us of anything we should be aware of relative to your child.
- Please DO NOT bring in any sick children (if they have a fever or otherwise ill, you will be contacted to pick them up).
- Make sure children in diapers are "changed" prior to entering the CAC and provide additional diapers in their bag.
- Leave "personal" toys or other such items at home.

Please keep in mind the CAC is a service provided for our members. Those who choose not to follow the rules WON'T be allowed to use the service.

MEMBERSHIP INFORMATION

Fees and dues excluding taxes:

Membership Type	Initiation Fees	Monthly Dues
Social	\$1,000	\$100
Tennis	\$2,250	\$175
Golf	\$5,000	\$330

Transfer Fee: \$200

Upgrades: Contact the Welcome Center for more details.

PAYMENT POLICY

There are two options for purchases at SVCC:

- Utilize the credit card that you registered with SVCC to be kept "on file."
- Present a credit card at the time of transaction.

If you do not have a card on file or would like to add a card, please stop by the Welcome Center.

COMMENTS & SUGGESTIONS

If you have any comments or suggestions, please contact the GM's Office at 203-0000 x 6 or gm@shadowvalleyinfo.com

CLUBHOUSE HOURS OF OPERATION

The Clubhouse will be open at 8:00 AM to 10:00 PM 7 days a week. These times are subject to change when special events, leagues, weather, etc. warrant.

See the department sections for specific hours or call 203-0000 x 0.

Check www.shadowvalleyinfo.com for closing information.



CHEF AARON'S CORNER

With Fall upon us, it's chili time and we are going to hold a cook-off during the Fall Festival. This will be a pretty straight forward event. If you are interested we have registration forms in the Welcome Center. There will only be one category so any variation of chili will be accepted. All teams will be required to prepare enough for event participants tasting portions and bring whatever they will require to keep the chili hot. We will provide tasting cups as well as tables. The winner will be the contestant that receives the most votes from the event participants, so be sure to bring your fans. The winning prize will be based on total participation among contestants and event participants. It's going to be a lot of fun so if you think that you have the best of the best chili in the neighborhood bring it out and let's find out!



Along with the change of seasons, our menu will be changed to reflect seasonality. This new menu will be implemented in October.

As always, we are looking to improve the experience at the Overlook every day and welcome your input. Feel free to stop me in the restaurant or send me an email at chef@shadowvalleyinfo.com with your ideas.

KIDS EAT FREE

MONDAY - THURSDAY 5-9PM

Expanded by popular demand, Kids Eat Free in October Monday through Thursday from 5-9 PM. We are offering a complimentary Kids Meal (excluding "Kids Entrées") with the purchase of each adult entrée.

Busy school nights...we'll cook for you!

OCTOBER THEME NIGHTS

FISH BY THE OUNCE

FRIDAY, OCTOBER 12TH

A selection of the freshest fish you can get all cooked to order and paired with Chef's selection of seasonal sides.

MEXICAN THEME NIGHT

SATURDAY, OCTOBER 19TH

An authentic selection of Enchiladas, Tacos and Fajitas all served with traditional sides of Rice, Beans, Salsa and Guacamole.

All margaritas will be \$2 off and \$1 off Corona and Corona Light!

KOBE BEEF BURGER BUFFET

FRIDAY, OCTOBER 26TH

All you have to do is say how big you want it. All burgers made of 100% ground Kobe beef and served with a buffet of every topping you can think of as well as a selections of sides.

Burgers are better with beer, so all drafts will be \$1.00.

DATES TO REMEMBER

OCTOBER

- 5TH - POP with Jeff Fox
- 12TH - Fish By The Ounce
- 12TH - POP with Jovan
- 19TH - Mexican Theme Night
- 19TH - POP with Sean Kemp
- 26TH - Kobe Beef Burger Buffet Night
- 26TH - POP with Jeff Fox
- 26TH - Haunted House & Hay Rides
- 28TH - Fall Festival & Parade

NOVEMBER

- 2ND - Asian Theme Night
- 9TH - Steak By The Ounce
- 11TH - Golf Awards Dinner
- 14TH - Dessert Order Deadline
- 16TH - Mexican Theme Night
- 30TH - Kobe Beef Burger Buffet Night

Note: Events subject to change without notice.

MONTHLY DRINK SPECIALS!!!

WEEKDAYS 3PM - CLOSE

Appetizer Specials
½ Off Draft Beer & House Wine
\$3 Well Drinks

MONDAYS

\$3 Long Island Ice Tea
\$2 Wells

TUESDAYS

\$2 Off Skinny Drink Menu

WEDNESDAYS

15% Off Any Bottle Of Wine

THURSDAYS

\$3 Bartender's Special

FRIDAYS

\$2 Off Shots

SATURDAYS & SUNDAYS

8AM - 12PM: ½ Price Bloody Marys

3PM - CLOSE: \$2 Draft Beers

Note: Subject to change without notice.

POLICIES, RULES & REGULATIONS

- Although reservations are not required for normal dining, we highly encourage them. It allows us to be prepared for you and offer the best service possible; however, if you are more than 15 minutes late, your reservation will be forfeited so that we may accommodate other patrons.
- Reservation cancellations for any of our special meals or events that require reservations require a 72 hour or otherwise stated notice. Otherwise, you'll be charged 50% of the party's reservation.
- Be mindful of your child's behavior. The Overlook is a casual environment, but it's also a fine dining experience for many.
- Children need to be at the table supervised by an adult at all times and are not permitted to be roaming around the Clubhouse (inside or out).
- Please allow us to seat you, inside or outside.

NEW MENU

Chef's been working hard on creating a new menu that will debut in October featuring items such as:

- Roasted Pepper Hummus
- Southwest Chicken Egg Rolls
- Mexican & Buffalo Pizzas
- Chicken Cordon Bleu Sandwich
- BBQ Meatloaf Sub
- Southwest Patty Melt
- Black & Bleu Sandwich
- Goliath Burger
- Moroccan Spiced Pork Tenderloin
- Slow Roasted Baby Back Ribs
- Hawaiian Style Grilled Swordfish
- Spice Rubbed Yellowfin Tuna

Chef Aaron Nix
479-203-0000 x 1
chef@shadowvalleyinfo.com



Fall Festival

Sunday, October 28TH
@ 2:00 PM



The Costume Parade will start at Strathmore Station on the Corner closest to the Entrance at 1:45 pm, so please be there and ready to walk!



Volunteers Needed 🍁 Ages 14 and Up 🍁 Contact Teresa Booher



🍁 Chili Cook-Off 🍁

Cooks, \$20 per Team Spectators, \$2 per Ticket for Voting
Come Put Your Chili Making Abilities To The Test!

HAUNTED HOUSE

Friday, October 26th 6:00-9:00 PM

Admission: \$5.00 Per Person



AND HAYRIDE



Build Your Own Burger Buffet
Wear A Costume And Get 10 % Off!



Volunteers Needed 🍁 Ages 12 and Up
Contact Teresa Booher @ 479-203-0000 x6

BIRTHDAY DINNER NIGHT

Members, come in on your birthday and get a complimentary appetizer or dessert with your meal.

No RAIN CHECKS! DINE IN ONLY!

EMAIL DISTRIBUTION LIST

Contact the Welcome Center to add your email to the distribution list and stay informed (your email will not be shared).

HOURS OF OPERATION

MON - FRI 11:00AM - 10:00PM
SAT 8:00AM - 10:00PM
SUN 8:00AM - 10:00PM

Note: The Kitchen closes at 9:00PM

CHEF'S TABLES / EVENTS / MEETINGS / PARTIES

The opportunities are endless...Baby Showers, Bunco Night, Graduation Parties, Rehearsal Dinners, Business Meetings and Meals. You name it, we'll work with you to plan it.

Our Clubhouse has spaces to accommodate groups from 10-180. We look forward to working with you to customize your menu and event décor to meet your expectations at a fraction of the price of other event venues.

Book your Holiday Parties Now!

Spaces are filling up quickly!

Call 479-203-0000 x 6

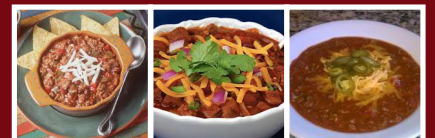
2012 CHILI COOK OFF

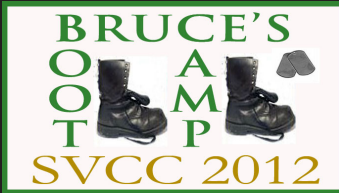
@ THE FALL FESTIVAL
SUNDAY, OCTOBER 28TH



Come support your favorite team. The winner will solely be based on everyone's votes. We will have a full bar and a buffet for all ticket holders.

Be sure to RSVP so we know how much to prepare.





ULTIMATE BOOT CAMP!

Want the ultimate workout challenge? Here's your chance to get involved in the "Ultimate Boot Camp!" Each group will be limited to 10 participants, a minimum of 6 per group. First come, first serve. Non-members may participate at an additional cost of \$25.

Each group will work out every day - rain or shine. The workouts will be a mix of cardio, weight training, stretching and fitness challenges. The objective will be to help you lose body fat and gain strength while offering you lots of variety and plenty of intensity!

These classes will have some running and lots of different leg work, so if you have bad knees this probably isn't for you. You must be able to jog one-half mile before you start.

EARLY RISERS GROUP

- Starts: MON OCT 1ST
- Ends: WED OCT 31ST
- Meets: Mon - Fri
5:15 AM - 6 AM
\$99 / Person

NOT SO EARLY RISERS GROUP

- Starts: TUE OCT 2ND
- Ends: TUE OCT 30TH
- Meets: Tue - Thu
9 AM - 9:45 AM
\$60 / Person

BRUCE WILLIAMS DIRECTOR OF FITNESS



Since SVCC's opening, I've been a member of the management team as the Director of Fitness providing the following services:

- Personal Training
- Various Group Classes
- Kids Fitness Activities
- Nutrition & Meal Planning
- Sport Specific Training Plans
- Rehabilitation & Physical Therapy

I've made my career in the fitness industry. I have a Masters of Exercise Science from the University of Arkansas, but just as important is my 20+ years experience working with clients ranging from professional athletes to weight room beginners.

Why use a professional trainer? Accountability, safety, intensity, new training routines and nutritional advice, etc.

Please feel free to stop in or contact me to talk about your next step in achieving better health and wellness. Ask me about setting up your free one-time fitness orientation.

CONTACT INFORMATION
203-0000 x 4
bmwfit@mac.com

FITNESS APPRECIATION NIGHT THURSDAY, OCTOBER 18TH

October 18th - 6 and 8:30 PM. @ the Clubhouse. Come enjoy a relaxing evening with free food and spirits, door prizes, chair massage and NO SWEATING!

You've worked hard, so come relax and reminisce.

Who's invited? Anyone who has participated in ANY fitness related events such as Personal Training, Boot Camp, Yoga, Pilates, Cycling, TRX, Warrior Workout, Mudders, etc.

Bring your spouse and leave the kids!!!

THINK YOU ARE FIT?

The inaugural "Fittest Person in the World." Okay, maybe not the world, but in our Shadow Valley world! Have you watched "Crossfit Games?" That'll give you an idea of the challenges and fitness tests that you'll be put through over two days.

Who: Current SVCC Members only
When: November 10th & 11th.
Format: Participate in several different fitness challenges, earn points and be crowned champion!
Cost: \$45 Prizes & food on Sunday.

More details are posted in the Fitness Center.

OCTOBER GROUP / AEROBICS CLASS SCHEDULE

There is a \$20.00 fee for members (\$30.00 for NON-MEMBERS). The fee covers unlimited classes for a "Household" throughout the month.

Inclement Weather Policy - When local schools close due to weather-ALL classes are cancelled!

Day of Week	Start Time	Class Type	Class Location
Monday	9:00 AM 9:00 AM 6:30 PM	Yoga Circuit Training (Wt Rm) ***PILATES- NEW***	Fitness Center Belfry Room Belfry Room
Tuesday	6:00 AM	Cycling	Belfry Room
Wednesday	9:00 AM	Pilates	Belfry Room
Thursday	6:00 AM	Cycling	Belfry Room
Friday	8:30 AM 9:00 AM	All Abs (30 Minutes) Yoga	Fitness Center Belfry Room
Saturday	8:00 AM	Cycling	Belfry Room

MON - FRI
5:00AM - 10:00PM

FITNESS CENTER
HOURS

SAT - SUN
7:00AM - 10:00PM



TRX TRAINING

WHAT IS TRX® SUSPENSION® TRAINING?



Born in the U.S. Navy SEALs and developed by Fitness Anywhere® (www.fitnessanywhere.com), Suspension Training® is a revolutionary method of leveraged body weight exercise. Easily set up the portable TRX® Suspension Trainer™ and you're in control. Safely perform hundreds of exercises that build power, strength, flexibility, balance, mobility and prevent injuries, all at the intensity you choose.

SEPTEMBER SCHEDULE

MONDAYS & WEDNESDAYS @ 6AM & 12PM

TUESDAYS & THURSDAYS @ 7PM

SATURDAYS @ 7:00AM & 9:00AM

Note: \$90 / Person. You can attend any or all classes!

Sign up now by contacting Bruce ASAP



GOOD LUCK IN LAS VEGAS!!!

10-6-12



TIME FOR THE MAXIMUM TRAINING TO PAY OFF!!!



WARRIOR WORKOUT!!!

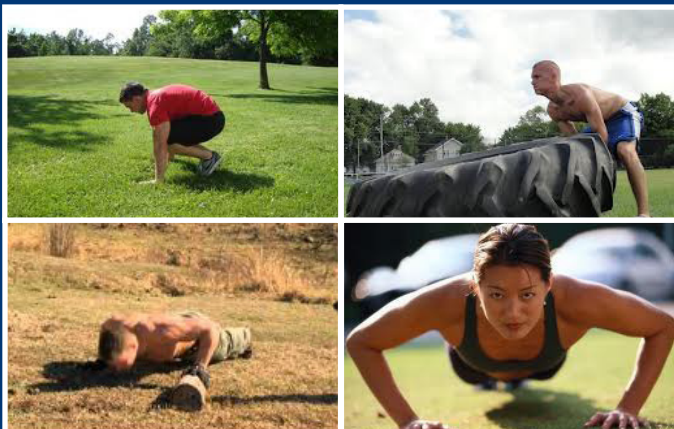
Mondays & Wednesdays @ 7PM & Saturdays @ 7AM

ONLY 12 people allowed! No Exceptions!

Warrior Workouts are: athletic, functional, core, flexibility, muscle building and cardio workouts...all wrapped up in a competition...push weighted sleds, rope drills, box jumps, 200 meter sprints and planks... that's one workout!

Get Tested – Get Results!

Interested? Email Bruce at bmwfit@mac.com



CLUB EXTREME - NEW!!!

The time is NOW to start planning your 2013 goals.

Time to push your fitness limits. Time to push your fitness experiences.

What is **CLUB EXTREME**? Attend the Fitness Appreciation Night on October 18th and see how joining this club will be like nothing you've ever belonged to before!

Interested? Email Bruce at bmwfit@mac.com





SHADOW VALLEY JUNIOR ACADEMY NEWS



The Academy has been introduced to add a more competitive edge to the Junior Program. It is off to a great start and participation is rapidly increasing.

Due to demand we have added another level to the program...the Black Group. This new level is for high school and Open level tournament players and subject to Pro approval. The Academy now consists of four levels: Black, Gold, Red and Green.

Black Group: Drills on Mondays and Wednesdays from 6:30-8:00PM & Fridays from 4:30-6:00PM.

The next session of the Academy will start the week of Monday, October 22nd for ALL four groups including the Non-competitive Groups (i.e. Ankle-Biters, Young Guns and Sprouts).

Juniors!! Don't forget to sign up for the SVCC/WLFC Fall Classic coming up in the middle of October.

Any questions regarding Junior Tennis or the Academy, please call Jordan at the Tennis Shop.

WLFC/SVCC FALL JUNIOR CLASSIC

Date: October 19-21
Events: Boys & Girls Open and Novice
Divisions: 18,16,14,12,10 & ↓ Singles & Doubles
Entries Close: October 15
Draws posted: October 18
Referee: David Smith
Site Numbers: WLFC 204-1009 SVCC 203-0000 x3
Draw info: Jake Shoemake 644-1520
David Smith 715-3063
Email: Jake.Shoemake@wal-mart.com
WLFC Address: 1701 SE 14th St
Bentonville AR 72712
Entry Fees: \$27 for Singles / Player
\$18 for Doubles / Player
Tourn. ID: 703305612
Important Info: USTA membership required
Tiebreak Used In Lieu Of 3rd Set
Limited To 2 Events / Player

NEW MERCHANDISE

Come by the Tennis Shop to check out the latest tennis merchandise from Adidas, Nike, Wilson and more.

LESSON PRICES

Private lessons are \$45/hour.

Group lessons are based on the following rates:

2 Member Group - \$22.50 Non-Member - \$26.00
3 Member Group - \$15.00 Non-Member - \$18.50
4 Member Group - \$11.25 Non-Member - \$14.75
5-8 Member Group - \$9.00 Non-Member - \$12.50

Note: These prices are subject to change at any time.

ADULT TEAM TENNIS NEWS

Congratulations to our SVCC Tennis Teams that have performed well in their respective local leagues.

6.0 Mixed (Captain Bauer) - State Runner-Up
3.5 Women Over 40 (Captain Aguila) - State Champs
3.5 Men Over 40 (Captain Bachman) - State Champs

Combo Doubles has now started and SV teams are once again at top of most local league divisions. Hopefully, we will get some more teams back to Little Rock competing for more Silverware in November.

Looking ahead into December, mark your calendars and save the weekend of November 30-December 2 for our eagerly awaited Club Championship sponsored by Foster Roofing.

The format will be USTA Singles and Doubles 2.0, 2.5, 3.0, 3.5, 4.0 and Open Levels. This event is for Tennis and Golf Members only, so start looking for your partner now!!! This popular event will be filled with tennis, food, drinks, dancing and lots of fun!

UPCOMING EVENTS & TOURNAMENTS

10/19-21 SVCC/WLFC Fall Junior Classic
10/22 New Academy Session Begins
11/2-5 USTA COMBO STATE CHAMP. 5.5, 7.5 & 9.5
11/9-11 USTA COMBO STATE CHAMP. 5.0, 6.5 & 8.5
11/30-12/2 SVCC CLUB CHAMPIONSHIP

Check the ASTA website for further details on the 2012 Mini Cooper Combo League Timeline or any other state league information.

Contact the Tennis Shop with any questions.

www.shadowvalleytennis.com

If you haven't already registered, go to www.shadowvalleytennis.com and click on the register button. Once you're registered, you can make online court reservations, receive daily emails about upcoming events, programs and become a member of the string center.

TENNIS NEWS & NOTES

Luke White
Director of Tennis
479-203-0000 x 3





TEE TO GREEN FROM THE COURSE WHISPERER

The Fall season is upon us. I just wish that the Razorback football season was as good as the weather has been. The couple of rains that we have received have been as good as they get; slow, gentle and spread over a number of hours. The turfgrass on the golf course has greened up and most areas have recovered from the heat and drought stress from this summer.

The greens have really been responding the way I was hoping they would to the Fall weather conditions. I am pleased with the recovery that #8 has made so far. The new seed that we have planted is coming to the surface and we should have the thin areas filled in with new bentgrass seedlings within the next month. As it always seems to be the case, when the greens look good and are rolling well it's time to aerate them. I have noticed lately that we are seeing more standing water on the greens after rain events which tells me that they need to be thinned out and the aeration process will accomplish that. We will be using $\frac{1}{2}$ " tines that will be spaced approximately $2\frac{1}{2}$ " apart. We have fertilized the greens so that they will be strong and healthy when we aerate them which should make for a quick recovery. It is my goal to have the greens back in good shape by the first weekend in October.

I mentioned last month that I would be making a fertilizer plus pre-emergent weed in one application to the warm season grasses in September, but after further researching all my options I decided to use a couple of different products that will be the most cost effective approach for controlling the weeds. We will be making these applications in late October and early November.

The following are some tasks that we will be working on during the month of October;

- Continue to work on #8 green. Getting it as good as our other greens is our goal.
- Make the pre-emergent weed applications to all the warm season grass areas
- Make our Large Patch disease applications to the collars
- Start making the Dallisgrass weed applications
- Start making treatments to stop the encroachment of the Zoysia and Bermudagrass into the Bentgrass greens. This is series of monthly applications during the Spring and Fall months.
- We will continue our normal weekly mowing schedule, but as the weather cools off the mowing will be replaced with the task of removing leaves.

As always if you have any questions about what is taking place on the golf course please do not hesitate to either give me a phone call or stop me when you see me on the golf course. I would be happy to answer your question or to take your comment or suggestion under consideration.



Aerification Step 1: Aerifying & Pulling the Cores



Aerification Step 2: Picking Up The Cores



Aerification Step 3: Removing Excess Old Sand



Aerification Step 4: Placing A New Layer Of Sand



Aerification Step 5: Brushing & Rolling In New Sand



GUEST PLAY: POLICIES / PROCEDURES / PACKAGES

Regular guest fee is \$65 per guest.

Our goal is to serve our members and their guests in a professional, friendly manner.

GUEST POLICIES & PROCEDURES

- Members are responsible for their guests.
- All Guests MUST check in at the Golf Shop PRIOR to any play (including warm-up) and must be accompanied by the member.
- Tennis and Social members plus Benton and Washington county residents may only play 4 times per calendar year and must be accompanied by a Golf member.
- Inform your guest of the dress code.
- Always call ahead for a tee time.
- Inform the staff BEFORE your guest arrives if there are any special instructions on how you'd like to handle any payments.
- Members who have guest(s) that "sneak on" will be charged for a full round of golf and are subject to suspension of privileges.

GUEST FEE GIFT PACKS

- 6 Pack \$342* (\$57 per guest)
- 9 Pack \$468* (\$52 per guest)
- 12 Pack \$540* (\$45 per guest)

* = Non-Refundable

HOLE-IN-ONE CLUB!!!

Sign up for the 2012 Hole-in-One (HIO) Club before you tee up your next round! Any time a member of the HIO Club records an ace, we will bill each member of the HIO Club \$10.00. Half of the charge will be applied to the Overlook's and half to the Golf Shop's credit book.

VANDALISM

Help us protect the course. If you see someone acting suspiciously or witness anyone on the course not playing golf, please notify the Golf Shop or the Gatehouse to report such incidents.

PERSONAL CARTS & VEHICLES

Personal Carts and Vehicles will NOT be allowed behind the Clubhouse or on any cart paths. Personal vehicles may only be driven on the **ASPHALT** portions of the Clubhouse parking lot and are to be parked in the designated cart parking spaces.

Please monitor the drivers as many of you have expressed concerns about the "reckless" driving.

LEASE CART MAINTENANCE

All carts need to be serviced monthly to check the batteries, tires and address any other issues.

Call ahead and we'll arrange to pick them up.

COOLER & TOWEL AMNESTY

Please be sure when using the Club towels and Golf Cart Coolers to return them to their respective department so we can continue to provide this service.

Thanks for helping us out.

COMMUNITY CART REMINDERS

MAINTENANCE-It's very important that your leased cart is maintained well. Therefore, if you are leasing a cart we **REQUIRE** that you bring your cart in for monthly service. We will check the battery water level, check the tire air pressure and clean the cart. Your cart should be ready for pick up within 24 hours.

DON'T BREAK YOUR LEASE AND LOSE YOUR CART!!!

You are in violation of your lease if you are:

- Strapping kids in the bagwell.
- Allowing anyone not in your household to drive the cart.
- Stopping at a house during a round to get food or beverages.
- Letting kids without a driver's license (not a permit) drive the cart.
- Driving anywhere on the course without first checking in at the Golf Shop PRIOR to playing (and yes that includes at night).



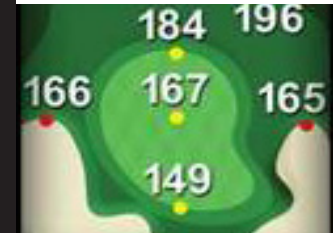
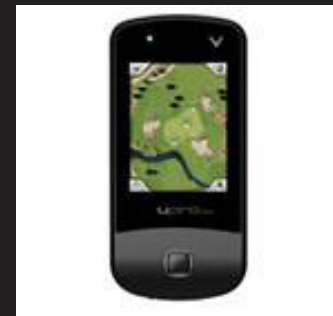
If you have any questions about Community Carts, please contact the Golf Shop.

OCTOBER GOLF EVENTS

- 1 Jr. Achievement Outing (Course Closed)
- 5 Shiloh Christian Outing (Course Closed AM)
- 6 Komen-Ozark SFTC Outing (Course Closed)
- 19 SVCC Women's Invitational (Course Closed AM)
- 21 Fall Best Ball
- 28 Halloween Scramble

Call the Golf Shop for more details.

CALLAWAY UPRO MX+



Callaway's handheld GPS device that features actual aerial imagery. Full color display that gives accurate readings to all of the course features such water, trees and bunkers. This information will help you decide whether or not to layup or challenge the hazards, improving your score! If you would like to try it out first, we have a demo in the Golf Shop available.

OCTOBER HOURS

SHOP: 8:00AM - SUNSET
COURSE: 8:00AM - Sunset
PRACTICE FACILITIES: 7:30AM TO 30 Minutes prior to sunset. Note: The Range Closes 4PM on Sunday and Opens at 11:00AM on Monday for maintenance.

Please call ahead to get course and range conditions.



MGA RYDER CUP

The 2012 MGA Ryder was played September 8th and 9th. The "Young Guns" had a 7 point lead after day one, but during day two's singles matches the "Old Guys" came back to claim the victory!



Congratulations to our winning team!

SEPTEMBER HOLE-IN-ONE BETTY HENDERSON



Congratulations to Betty Henderson! She recorded an ace on September 16th on #8 with her Callaway Pitching Wedge.

Witnesses: Oscar Henderson, Jim and Lea Ann Kirby.

SVMGA INFO & EVENTS

Thanks to all who participated in the various events throughout the year.

Contact the Golf Shop for details on SVMGA events, times, fees, etc.

COUPLES LEAGUE FINAL STANDINGS

1ST Place
Rick & Anne McClintock

2ND Place
Steve & Kristi Lee

3RD Place
Stephen & Kristen Kmiec

Congratulations to Rick and Ann along with all who played this year for a great season of Couples Golf.

MGA MONDAY NIGHT LEAGUE



CHAMPIONS

ROGER MCNITT
JOHN BARTELL
JOHN BRUNNER
JIM CASSERLY
RICK MCCLINTOCK
HAYES SHIMP

RUNNER-UP

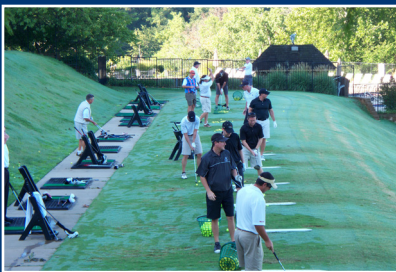
DAVE POLLARD
JEFF CLIFTON
RICK BOEDEKER
BRAD HOENER
JOEL PALMER
SCOT HUNDLEY

T-3RD

JEFF LYNCH
JAY SCHIPPANOSKI
CHRIS DOUGHERTY
ROGER GATES
MIKE RIBA
STEVE PHILLIPS

T-3RD

JOHN GREEN
KEVIN BILLINGTON
SCOTT LIVINGSTON
MARK RIECKS
JOE TREECE
TOM WISSING



The 2012 MGA Monday Night League has wrapped up for the year. Thanks to everyone for making 2012 our biggest yet for League. We are looking forward to making 2013 an even bigger and better season, so start getting your teams together!

2012 DEMO CLUBS

As the golf season winds down, we can now sell our 2012 demo clubs.



A better game by design.



We have drivers, fairway woods and hybrids from Ping, Callaway and TaylorMade. They are all at significantly marked down prices to clear space for the new line of 2013 equipment.

Come check out the great deals while supplies last!

WEDGE SALE

Cleveland CG 15 wedges have been marked down to \$99.95. These wedges feature precision milled face technology and zip grooves to increase spin and help you control short game shots.

